



Eric Baker
Estill County Extension
Agent for Agriculture
& Natural Resources

Avoid Soil Compaction in the Garden

Gardening season is in full force but recent rains have made it difficult to work in the garden. It's a concern when we try to work our soils too wet. Soil compaction creates an unfriendly growing environment for plants and is a serious problem for many home gardeners. However, it is relatively easy to prevent.

Compaction transforms soil into a difficult environment for plant growth by making it harder for roots, water

and soil to penetrate the ground. Major causes are working the soil when it is too wet, foot traffic, and excessive rototiller use.

To reduce this problem, it is best to avoid working in the garden or walking in it when the soil is too wet. Squeeze a handful of soil and if it forms a muddy ball, rather than crumbling when you open your hand, stay out of the garden area.

Walk between plants and rows in the garden area to reduce compaction in primary plant growth areas.

Excessive rototiller use destroys soil structure and promotes compaction. When compaction takes place in a dense soil structure, it also makes root growth more difficult.

A little hand hoeing, rather than a rototiller, may be all you need to do to eliminate a few weeds.

It usually causes less soil damage than repeated rototilling and is less harmful to the earthworms that help aerate the soil.

You also can use mulch to control weeds instead of tilling. A 2- to 3-inch layer of mulch relieves the pressure of walking on the soil, reducing the degree of compaction. Organic mulches are materials such as lawn clippings or straw. Do not use lawn clippings that come from a lawn recently treated with herbicides.

One excellent way to spread mulch materials more thinly is to first lay about six sheets of newspaper on the soil surface then cover the paper with organic matter. In this case the newspaper is really the mulch, and the organic matter holds the paper in place and improves appearances. Soils will remain cool longer in the spring under

organic mulches, because the sun does not strike the soil. If you want your garden to grow rapidly in the spring, do not scatter the mulch until the soil warms. One precaution needed if you use straw is to be sure it is weed seed free. Otherwise, it will be a source of weeds for the growing season.

Most organic mulches will compact and start to decompose by fall. They can be tilled under easily, adding valuable organic matter to the soil.

Contact me at the Estill County Cooperative Extension Service for more gardening information. Our telephone number is 723-4557.

Educational programs of the Cooperative Extension Service serve all people regardless of economic or social status and will not discriminate on the basis of race, color, ethnic origin, national origin, creed, religion, political belief, sex, sexual orientation, gender identity, gender expressions, pregnancy, marital status, genetic information, age, veteran status, or physical or mental disability.

Wishing Well®

| | | | | | | | | | | | | |
|---|---|---|---|---|---|---|---|---|---|---|---|---|
| 6 | 2 | 3 | 7 | 6 | 8 | 2 | 3 | 4 | 5 | 6 | 3 | 5 |
| B | Y | J | B | L | Y | O | O | B | F | I | B | L |
| 6 | 2 | 7 | 4 | 2 | 7 | 3 | 5 | 7 | 8 | 5 | 2 | 4 |
| S | U | E | E | R | H | S | O | O | O | W | E | O |
| 6 | 7 | 6 | 7 | 4 | 6 | 2 | 3 | 6 | 4 | 6 | 5 | 2 |
| S | N | I | O | P | S | F | E | Y | E | O | I | L |
| 7 | 3 | 7 | 2 | 5 | 6 | 4 | 2 | 7 | 2 | 5 | 7 | 5 |
| R | C | A | E | N | U | N | C | B | T | G | L | W |
| 3 | 5 | 3 | 6 | 7 | 4 | 2 | 6 | 8 | 5 | 8 | 2 | 5 |
| U | I | R | R | E | T | S | S | U | T | F | U | H |
| 4 | 5 | 3 | 2 | 3 | 2 | 5 | 4 | 5 | 8 | 3 | 8 | 5 |
| O | L | I | C | T | C | O | C | V | L | Y | O | E |
| 4 | 8 | 2 | 4 | 2 | 4 | 8 | 4 | 8 | 2 | 4 | 8 | 8 |
| H | U | E | A | S | N | R | G | I | S | E | S | H |

HERE IS A PLEASANT LITTLE GAME that will give you a message every day. It's a numerical puzzle designed to spell out your fortune. Count the letters in your first name. If the number of letters is 6 or more, subtract 4. If the number is less than 6, add 3. The result is your key number. Start at the upper left-hand corner and check one of your key numbers, left to right. Then read the message the letters under the checked figures give you.

©2019 King Features Syndicate, Inc.

CryptoQuip

This is a simple substitution cipher in which each letter used stands for another. If you think that X equals O, it will equal O throughout the puzzle. Solution is accomplished by trial and error.

Clue: R equals W

RKXH LIT RBWUK BH BWKAXWX

RKI'G QXBAAL JH WXQQJPJU

GKBMX, J GTMMIGX LIT

RJWHXGG PJWHXGG.

©2019 King Features Synd., Inc.

CryptoQuote

One letter stands for another. In this sample, A is used for the three L's, X for the two O's, etc. Single letters, apostrophes, the length and formation of the words are all hints. Each week the code letters are different.

FJ PIPOKL ZHMFK PVJLK ML

P RFEPLTK FJIL MR JLK

JA FYK QVKPRPLFKRF

RKLRPFMJLR ML FYK IJEVN.

— AEKDP RFPEO

©2019 King Features Synd., Inc.

Puzzle Answers

June 19, 2019

Puzzles4Kids

Answer

What did the mother rope say to her children?

Don't be knotty.

Letter Box

Solution

| | | | | | | | | |
|---|---|---|---|---|---|---|---|---|
| D | U | P | L | I | C | A | T | E |
| L | E | T | P | U | A | I | C | D |
| I | A | C | D | T | E | P | L | U |
| E | L | D | I | P | T | U | A | C |
| T | C | A | E | D | U | L | P | I |
| U | P | I | A | C | L | E | D | T |
| A | I | U | T | L | D | C | E | P |
| C | T | L | U | E | P | D | I | A |
| P | D | E | C | A | I | T | U | L |

THE —: JOHN GRISHAM NOVELS

| | | | | | | |
|---|---|---|---|---|---|---|
| S | B | S | R | R | R | R |
| R | N | E | E | E | E | E |
| E | O | O | L | N | B | K |
| T | T | T | M | M | T | O |
| H | A | A | S | A | M | R |
| R | I | G | H | R | L | U |
| E | H | C | I | J | A | S |
| N | W | E | O | T | T | E |
| C | O | N | F | E | S | S |
| L | T | R | E | K | A | M |
| L | T | R | E | K | A | M |

CryptoQuip answer

When you watch an athlete who's really in terrific shape, I suppose you witness fitness.

CryptoQuote answer

To awaken quite alone in a strange town is one of the pleasantest sensations in the world.

— Freya Stark

FEAR & KNIGHT

answer

| | | | | | | |
|---|---|---|---|---|---|---|
| | | | C | | | |
| | D | R | O | L | L | |
| | I | | A | | | |
| R | A | G | L | A | N | A |
| W | | L | P | | H | U |
| E | U | C | H | R | E | R |
| D | | | I | | W | O |
| | | | D | | E | E |
| | | | G | R | I | D |

Even Exchange answers

- Flame, Frame
- Barney, Barley
- Lapel, Label
- Slower, Flower
- Hardy, Harry
- Grown, Growl
- Branch, Blanch
- Grape, Grade
- Elvis, Ellis
- Cannon, Cannot

Weekly SUDOKU

Answer

| | | | | | | | | |
|---|---|---|---|---|---|---|---|---|
| 3 | 9 | 6 | 5 | 2 | 7 | 1 | 4 | 8 |
| 8 | 5 | 4 | 1 | 9 | 6 | 3 | 7 | 2 |
| 7 | 1 | 2 | 3 | 8 | 4 | 6 | 9 | 5 |
| 5 | 7 | 9 | 6 | 1 | 8 | 4 | 2 | 3 |
| 4 | 6 | 3 | 2 | 7 | 5 | 8 | 1 | 9 |
| 2 | 8 | 1 | 9 | 4 | 3 | 7 | 5 | 6 |
| 6 | 4 | 7 | 8 | 5 | 2 | 9 | 3 | 1 |
| 9 | 3 | 5 | 4 | 6 | 1 | 2 | 8 | 7 |
| 1 | 2 | 8 | 7 | 3 | 9 | 5 | 6 | 4 |

King Crossword Answers

Solution time: 25 mins.

| | | | | | | | | | | |
|---|---|---|---|---|---|---|---|---|---|---|
| A | P | S | E | M | O | L | L | M | A | P |
| M | E | A | N | A | R | I | A | A | C | E |
| M | A | R | V | E | L | O | U | S | R | A |
| O | R | I | O | L | E | S | A | T | I | N |
| Y | O | M | A | O | R | I | | | | |
| D | I | M | S | B | A | N | K | N | I | T |
| E | R | A | O | R | T | E | G | O | | |
| B | A | R | B | S | C | I | A | T | O | M |
| Z | I | L | C | H | U | S | | | | |
| B | R | I | B | E | A | S | T | R | A | L |
| R | A | P | M | A | R | G | A | R | I | N |
| E | T | A | O | B | O | E | A | L | O | E |
| D | E | N | N | A | B | S | Y | E | N | S |

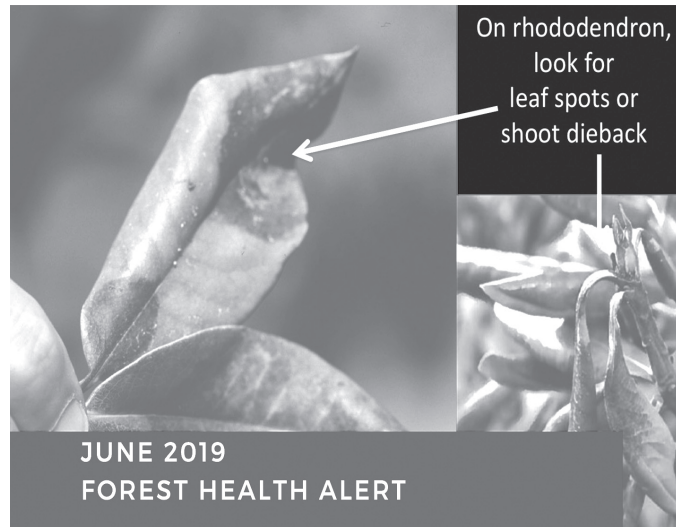
Forest Health Alert: Sudden Oak Death

A plant disease called "sudden oak death" was recently detected on rhododendrons for sale in nearby states including Oklahoma and Indiana (ex. Walmart, Rural King) and may have also been shipped to Kentucky (unable to confirm yet). The pathogen that causes this disease, *Phytophthora ramorum*, can infect many different host plants. On rhododendrons and most other plants, symptoms are minor but, as its name suggests, it can kill oak trees as well as several other species. Sudden oak death is a major problem on the west coast where it has been killing coast live oaks and tanoaks since its arrival in the 1990's. We don't know what type of damage this disease

could cause if it spreads into our forests but, given the importance of our oak species, it is a major concern.

Stores that had been shipped potentially infected rhododendrons are proactively destroying those plants but you can help by scouting for symptoms. If you recently purchased rhododendrons, inspect them for signs of leaf spots or shoot dieback. Report any suspicious symptoms to the Estill County Extension office at 723-4557 or the Office of the State Entomologist at 859-257-5838.

For more information, go online to <http://forestry.ca.uky.edu/sod> or visit the Estill County Extension office at 76 Golden Court (off Stacy Lane) in Irvine.



On rhododendron, look for leaf spots or shoot dieback

JUNE 2019
FOREST HEALTH ALERT

SUDDEN OAK DEATH

A PLANT DISEASE CALLED SUDDEN OAK DEATH WAS RECENTLY DETECTED ON RHODODENDRONS FOR SALE IN NEARBY STATES AND MAY HAVE BEEN SHIPPED TO KY.

If it spreads, this disease can infect many plants and kill oak trees. Carefully inspect any newly purchased rhododendrons for symptoms like leaf spots or shoot dieback and contact Joe Collins (Joe.Collins@uky.edu, KY Office of the State Entomologist, 859-257-5838) if you notice anything suspicious.

Learn more:
forestry.ca.uky.edu/sod



Forest Health
College of Agriculture, Food and Environment

Photo credit: Joseph Obien and U of Illinois Plant Clinic



The Garden Bug

The **rose** plant itself is said to be around 35 million years old; it has a very long history as a symbol for love and beauty *and* for politics and war. Cultivation of roses began some 5,000 years ago, probably in China. During the Roman period, they were used as confetti at celebrations, for medicinal purposes, and as a source of perfume.

Roman nobility established large public rose gardens in their cities.

— B. Weaver

Sources: www.adirondackalmanack.com, onlinelibrary.wiley.com

© 2019 by King Features Syndicate, Inc. World rights reserved.



Bye-bye Mosquitoes

Purple martins love mosquitoes. Putting up purple martin housing is a sure way to eliminate mosquitoes from your backyard. Martin housing can be found at many local hardware stores or retail outlets that carry birding supplies. Once established, martins will return year after year.

E-mail: birdingbits@cflrr.com
© 2013 King Features Syndicate, Inc.

Stickeler's Puzzle



Below is a scrambled 15-letter word known to all. See how long it takes you to find the solution.

| | | | | |
|---|---|---|---|---|
| P | | | | |
| T | E | | | |
| C | H | S | | |
| I | N | S | I | |
| P | P | A | R | E |

©2019 King Features Syndicate

Stickeler's Answer on Page 11

Sammy's Furniture

722 Main Street, Ravenna • 723-6562
Open MON-FRI 9-6 and SATURDAY 9-5

- Tables & Chairs (We do special orders!)
- New Mattresses and Box Springs
- New Bedroom Suites
- New Living Room Suites
- New Recliners & Lift Chairs

NO CREDIT? BAD CREDIT? NO PROBLEM!

EASY FINANCING BY
MERCHANTS PREFERRED
LEASE PURCHASE SERVICES

Free Delivery & Set Up



Bible Trivia Answers

Now available by Wilson Casey! 2017 Bible Trivia box calendar loaded with daily teasers.

ANSWER: (1) Neither; (2) Amos; (3) Hoses; (4) Honey; (5) Blasphemy; (6) Nun