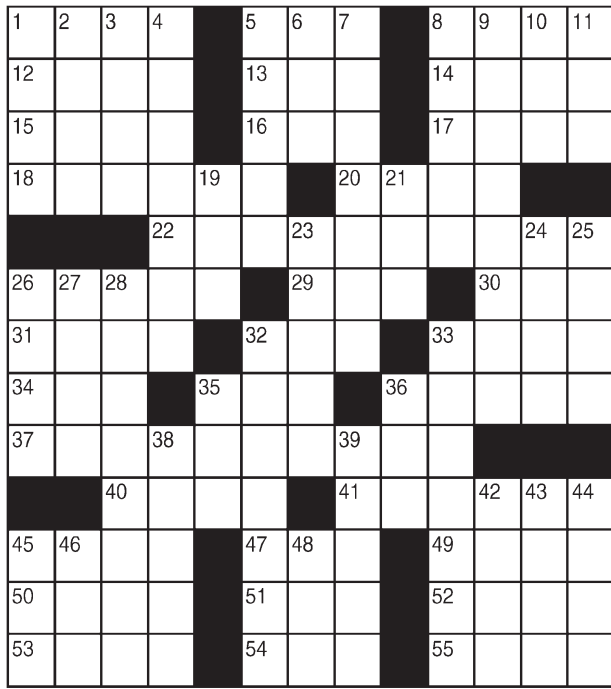


King Crossword

ACROSS

- 1 Healthful retreats
- 5 Meadow
- 8 "So be it"
- 12 Hay storage area
- 13 Plant bristle
- 14 Trademarked symbol
- 15 Emanation
- 16 Corral
- 17 Stench
- 18 Third-place medal
- 20 Honolulu's island
- 22 Waste time
- 26 Unexpected victory
- 29 Started
- 30 Nay opposer
- 31 Recording
- 32 Crazyed
- 33 Pack away
- 34 Rd.
- 35 One of the Brady Bunch
- 36 Starts
- 37 Jerry Herman musical
- 40 Comic Jay
- 41 Brother of Andrew and Charles
- 45 Reed instrument
- 47 Pal of Wynken and Blynken
- 49 Wings



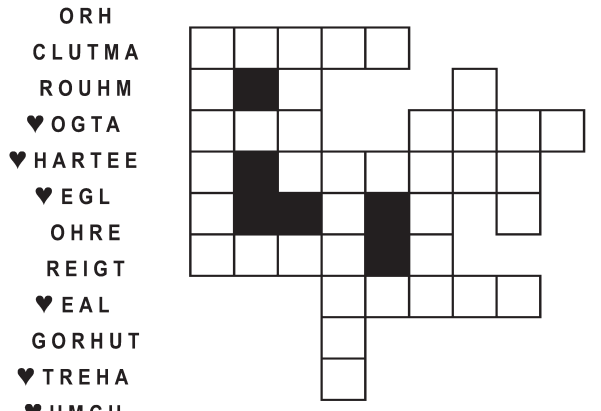
- 50 Gloomy
 - 51 Run-down horse
 - 52 Frost
 - 53 Connect the —
 - 54 Exist
 - 55 "Sports-Center" aier
- DOWN**
- 1 Thick slice
 - 2 Serve tea
 - 3 Frizzy hairdo
 - 4 Strap hanger
 - 5 Boutonniere site
 - 6 Ram's mate
 - 7 Peeved
 - 8 20-Across greeting
 - 9 Vary, as a tone
 - 10 Freudian concept
 - 11 "Neither snow — ..."
 - 19 Pimple
 - 21 Toss in
 - 23 Grassy plain
 - 24 French city
 - 25 Some conifers
 - 26 Hexagonal state
 - 27 Macadamize
 - 28 Make absolutely plain
 - 20-Across singer
 - 33 Computer security threat
 - 35 Garfield's owner
 - 36 Antiquated
 - 38 Lecherous looks
 - 39 Sill
 - 42 Muhammad and Laila
 - 43 Freeway access
 - 44 TV chef Paula
 - 45 Peculiar
 - 46 Scary cry
 - 48 Rowing tool

© 2019 King Features Synd., Inc.

FEAR & KNOT

By: rj johnson

DOUBT? ... OR DARE!



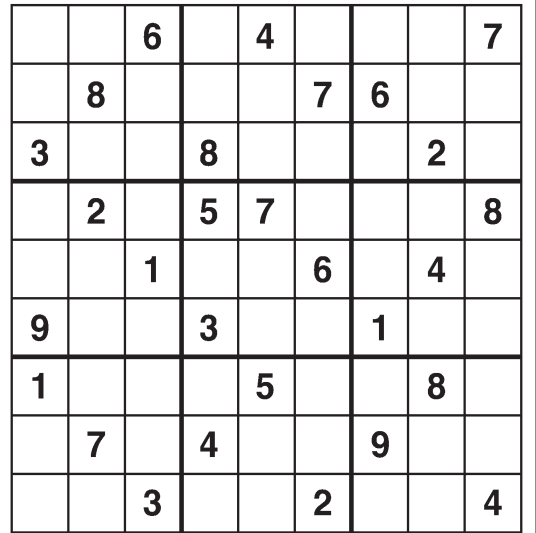
ORH
CLUTMA
ROUHM
♥OGTA
♥HARTEE
♥EGL
OHRE
REIGT
♥EAL
GORHUT
♥TREHA
♥HMCU

Unscramble these twelve letter strings to form each into an ordinary word (ex. HAGNEC becomes CHANGE). Prepare to use only ONE word from any marked (♥) letter string as each unscrambles into more than one word (ex. ♥RATHE becomes HATER or EARTH or HEART). Fit each string's word either across or down to knot all twelve strings together.

©2019 King Features Syndicate, All rights reserved.

Weekly SUDOKU

by Linda Thistle



Place a number in the empty boxes in such a way that each row across, each column down and each small 9-box square contains all of the numbers from one to nine.

DIFFICULTY THIS WEEK: ♦♦♦

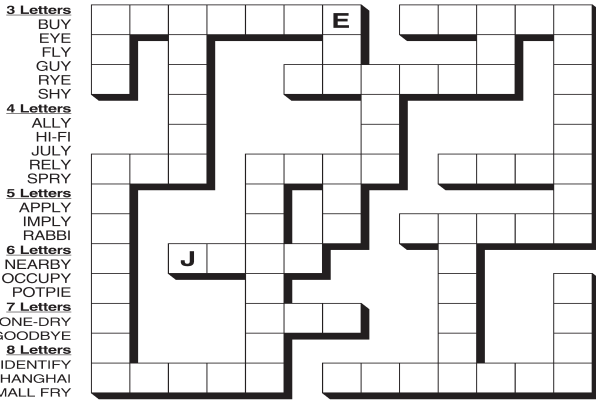
- ♦ Moderate
- ♦♦ Challenging
- ♦♦♦ HOO BOY!

© 2019 King Features Synd., Inc.

Puzzles4Kids

by Helene Hovanec

CRISSCROSS - RHYMES WITH "MY"
Each word will fit into one spot in the grid. Use the starting letters as a guide and fit each word into its spot. All words will be used, so cross off each one after you put it into the grid.

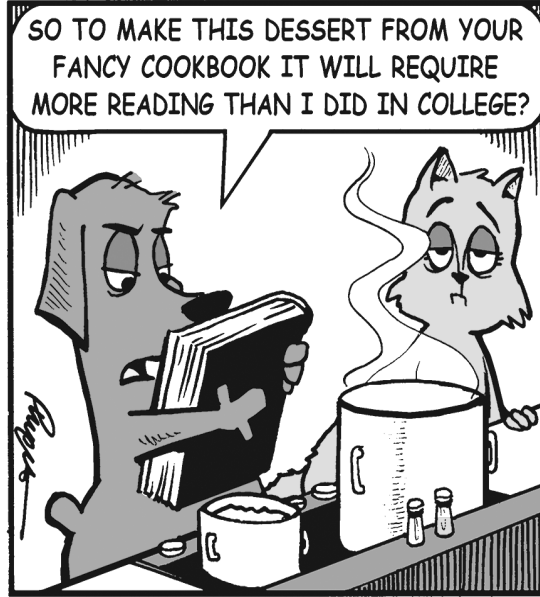


- 3 Letters BUY, EYE, FLY, GUY, RYE, SHY
- 4 Letters ALLY, HIFI, JULY, RELY, SPRY
- 5 Letters APPLY, IMPLY, RABBI
- 6 Letters NEARBY, OCCUPY, POTPIE
- 7 Letters BONE-DRY, GOODBYE
- 8 Letters IDENTIFY, SHANGHAI, SMALL, FRY

©2019 King Features Syndicate, Inc. All rights reserved.

Just Like Cats & Dogs

by Dave T. Phipps



MAGIC MAZE

TYPED WITH NO KEYS FROM THE HOME ROW

J Q O L W I G D B Y W T R P M
K I F T I D B Y W U S Q O M Y
K I F D N R R B Z X W U S Q R
O N R E T I R E M E N T Y Y R
L J E H E B M U I R F D R R E
C U A C R O Y R O T W V E T M
Q T S O I Y Q C E P R T T N O
P N O M Z C P L K P T U T U C
I M H M E O F E C I P O O N
B Z Y O P T W V W U S E P C I
R Q P N N T M T L R E P P I Z

Find the listed words in the diagram. They run in all directions forward, backward, up, down and diagonally

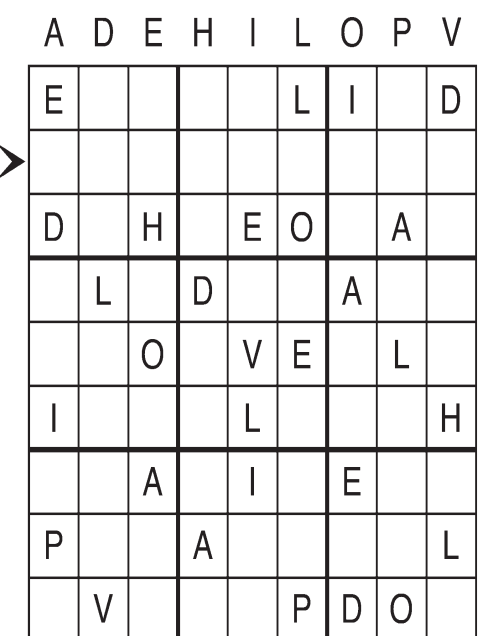
- Boycott
- Broom
- Country
- Courier
- Income
- Merry
- Peppermint
- Popcorn
- Potpourri
- Pottery
- Queen
- Retirement
- Twitter
- Winterize
- Zipper

© 2019 King Features Syndicate, Inc. All rights reserved.

Letter Box

by Linda Thistle

Place a letter in the empty boxes in such a way that each row across, each column down and each small 9-box square contains all of the letters listed above the diagram. When completed, the row indicated will spell out a word or words.



© 2012 King Features Synd., Inc.

Even Exchange

by Donna Pettman

Each numbered row contains two clues and two 6-letter answers. The two answers differ from each other by only one letter, which has already been inserted. For example, if you exchange the A from MASTER for an I, you get MISTER. Do not change the order of the letters.

- | | | | |
|---------------------|-------------|----------------------|-------------|
| 1. Park chair | — E — — — | Collection of grapes | — U — — — |
| 2. Jackson's bill | — — — N — — | Puddy tat's prey | — — — E — — |
| 3. Stuffy one | — — — D — — | One-time plum | — — — N — — |
| 4. Tub occupant | — A — — — | Disturb | — O — — — |
| 5. Use a mouse | — — — I — — | Coop sound | — — — U — — |
| 6. Provide evidence | — — — V — — | Investigate | — — — B — — |
| 7. Excursion | — — — — — | T Dilapidated car | — — — — R |
| 8. Bricklayer | — — — S — — | Georgia city | — — — C — — |
| 9. Icy rain | — — — L — — | Sugary | — — — W — — |
| 10. Upperclassman | — — — I — — | Motion detector | — — — S — — |

© 2019 King Features Synd., Inc.

Salome's Stars

ARIES (March 21 to April 19) Dealing with a difficult person can be the kind of challenge you Aries Lams love. Or it could be an energy-draining exercise in futility. Be certain your goals are worth your efforts.

TAURUS (April 20 to May 20) The Divine Bovine might be seeing red at having your crisis-resolution efforts overlooked. But others know the truth, and they can be expected to step forward when the time comes.

GEMINI (May 21 to June 20) You should be well on your way to finally making that important decision. Having the support of loved ones will help when crunch time comes. Keep a positive attitude.

CANCER (June 21 to July 22) Feeling uneasy about a move might not mean you're having a case of Cancerian wavering. It could be your inner sense is warning you to reassess your situation before taking action.

LEO (July 23 to August 22) Your pride could get in the way of admitting you might have erred. Best to 'fess up now before a small mistake turns into a big misunderstanding. Make the weekend a special family time.

VIRGO (August 23 to September 22) Trying to please someone with a less-than-glowing opinion of something you value could be a waste of time. If you like it, stay with it. The week's end brings an answer to an old mystery.

LIBRA (September 23 to October 22) There might be time to make a change. But be honest with yourself: Is it what you really want, or one you feel pressured into making? Your answer should determine your next move.

SCORPIO (October 23 to November 21) Change is dominant, but so is caution: Proceed carefully, checking each step along the way to avoid encountering any unwelcome surprises that might be lurking along your path.

SAGITTARIUS (November 22 to December 21) It could be a mistake to rely on someone to keep his or her promise without checking out previous performances. What you learn now could save you from a painful lesson later.

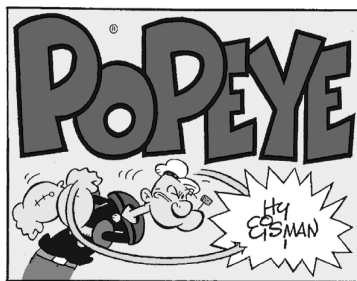
CAPRICORN (December 22 to January 19) Taking a strong stand on an issue you feel is too important to ignore could inspire others to follow suit. The weekend is a good time to socialize with old friends and make new ones.

AQUARIUS (January 20 to February 18) Your sensitive nature gives you an insight into the problems of someone close to you. Your offer of support could be just what this person needs to start turning his or her life around.

PISCES (February 19 to March 20) Financial matters continue to need even more careful analysis than usual. Use caution with investment possibilities. A personal relationship might take an unexpected turn by the week's end.

BORN THIS WEEK: You appreciate the wonders of the world and enjoy sharing your delight with others.

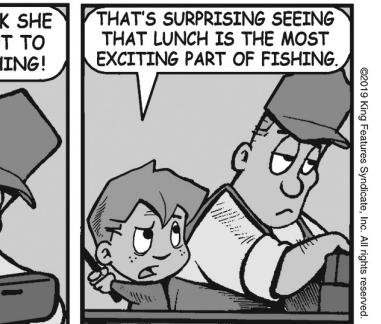
© 2019 King Features Synd., Inc.



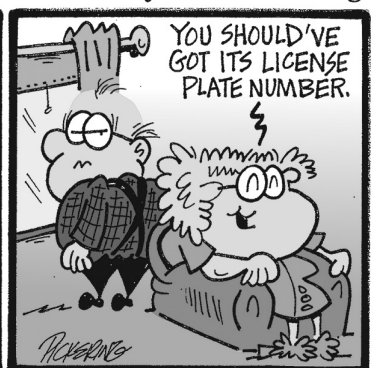
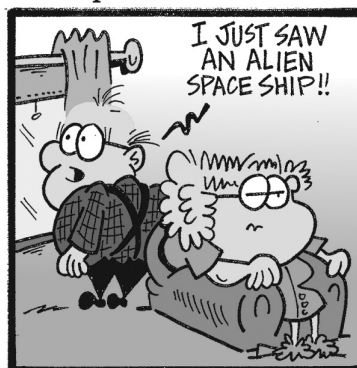
R.F.D.



Amber Waves



The Spats



by Jeff Pickering

© 2019 King Features Synd., Inc.