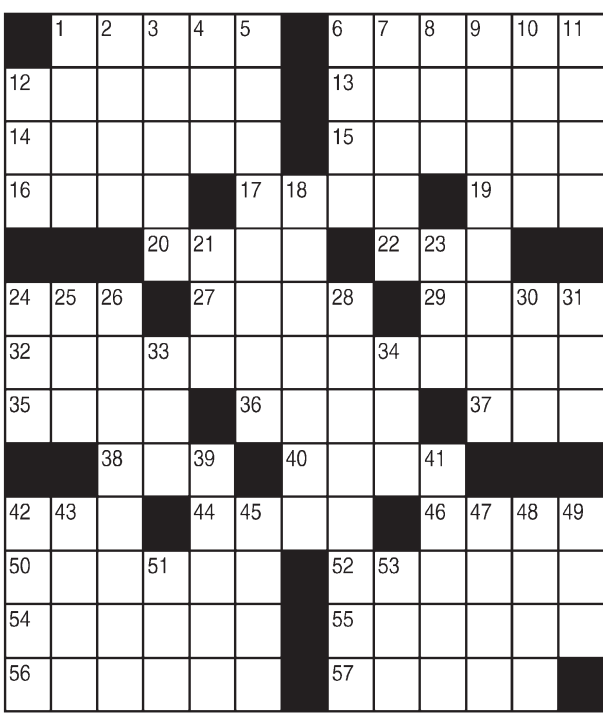


# King Crossword

**ACROSS**

- 1 Advertised heavily
- 6 Bilateral
- 12 South Dakota's capital
- 13 Colored ring
- 14 On the briny
- 15 Funhouse item
- 16 Use a sponge
- 17 Author Wister
- 19 D.C. fig.
- 20 Long skirt
- 22 Obtain
- 24 Suitable
- 27 Cacophonies
- 29 — parmigiana
- 32 5-ball desktop toy
- 35 Exchange premium
- 36 Former veep
- 37 Vast expanse
- 38 San Francisco's — Hill
- 40 One of the Three Bears
- 42 Sort
- 44 The same, in a bibliography
- 46 Approaching
- 50 Elegantly groomed
- 52 "Shoo!"
- 54 Mammoth occasion?
- 55 Room to maneuver
- 56 Nun
- 57 Brilliance



**DOWN**

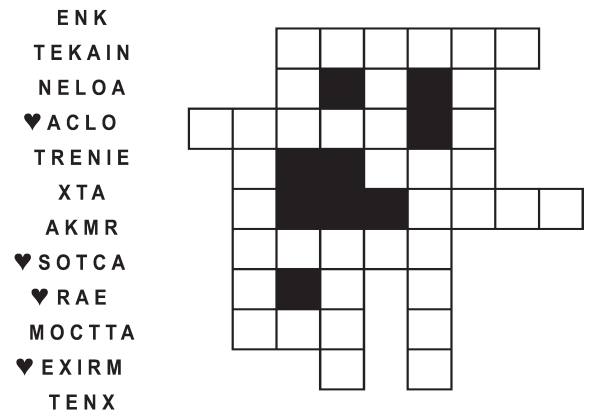
- 1 Stereo setup
- 2 Shrill bark
- 3 Opening comment
- 4 Historic period
- 5 Rehab
- 6 Domesticated goings-on
- 7 Squeeze
- 8 " — the ram-parts ..."
- 9 Carpeting
- 10 Medicinal plant
- 11 9-Down
- 12 Manhandle
- 18 Endearing
- 21 Big bother
- 23 Mendes or Longoria
- 24 Literary collection
- 25 Cribbage
- 26 Longtime scorekeeper
- 28 Mix up
- 30 Hearty brew
- 31 Michele of "Glee"
- 33 As well
- 34 Sleep phenomenon
- 39 Spree
- 41 Broadway backer
- 42 Cow-headed goddess
- 43 Places
- 45 Antelope's playmate
- 47 "The Music Man" setting
- 48 Buzzing pest
- 49 Attention getter
- 51 Roscoe
- 53 Common Mkt., once

© 2019 King Features Synd., Inc.

# FEAR KNOT

By: rj johnson

DOUBT? ... OR DARE!

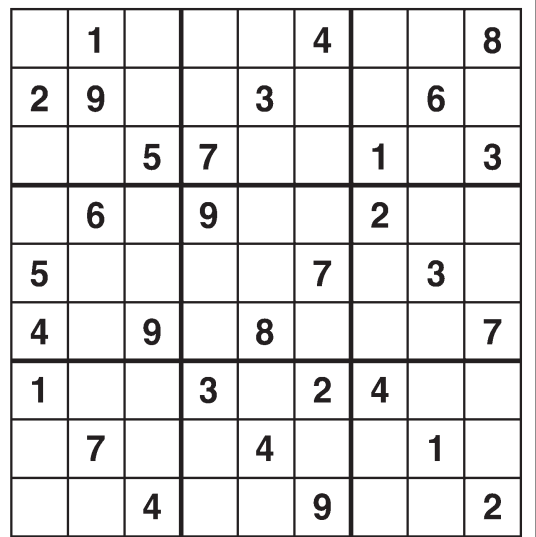


Unscramble these twelve letter strings to form each into an ordinary word (ex. HAGNEC becomes CHANGE). Prepare to use only ONE word from any marked (♥) letter string as each unscrambles into more than one word (ex. ♥RATHE becomes HATER or EARTH or HEART). Fit each string's word either across or down to knot all twelve strings together.

© 2019 King Features Syndicate. All rights reserved.

# Weekly SUDOKU

by Linda Thistle



Place a number in the empty boxes in such a way that each row across, each column down and each small 9-box square contains all of the numbers from one to nine.

**DIFFICULTY THIS WEEK:** ♦♦♦

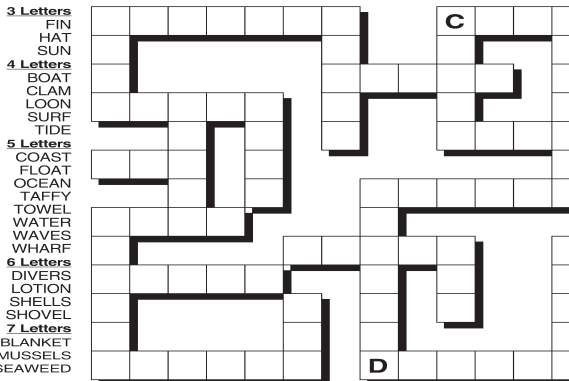
♦ Moderate ♦♦ Challenging  
♦♦♦ HOO BOY!

© 2019 King Features Synd., Inc.

# Puzzles4Kids

by Helene Hovanec

**CRISSCROSS - BEACH TIME!**  
Each word will fit into one spot in the grid. Use the starting letters as a guide and fit each word into its spot. All words will be used, so cross off each one after you put it into the grid.



© 2019 King Features Syndicate. All rights reserved.

# Just Like Cats & Dogs

by Dave T. Phipps



© 2019 King Features Syndicate, Inc. All rights reserved.

# MAGIC MAZE • AMERICAN CHEESES

F A X V S P N R L K I F P C A  
X V S T Q O A L I J H G E P E  
S S I W S D C A M X Y N P O V  
T R P N D O L J B H B I P O F  
D B R E T S N E U M L R E H Y  
X V H F A R M E R T O T R C R  
P C O M K E A I G V C S J A G  
E D B Z L I E D E R K R A N Z  
X W U E T R R L R Q E O C N L  
J I T G F D C K C I R B K C A  
Y X W V T S R P O N L K J I G

Find the listed words in the diagram. They run in all directions forward, backward, up, down and diagonally

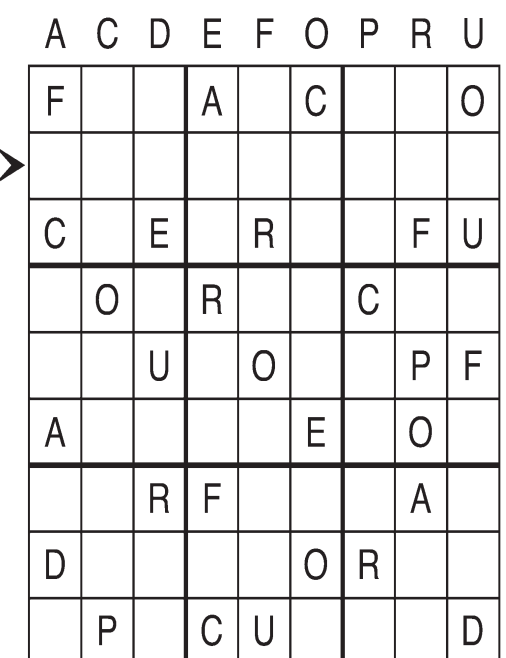
- Bergenost
- Brick
- Cheddar
- Colby
- Farmer
- Hoop
- Liederkrantz
- Limburger
- Muenster
- Nacho
- Pepper jack
- Provel
- String
- Swiss
- Teleme

© 2019 King Features Syndicate, Inc. All rights reserved.

# Letter Box

by Linda Thistle

Place a letter in the empty boxes in such a way that each row across, each column down and each small 9-box square contains all of the letters listed above the diagram. When completed, the row indicated will spell out a word or words.



© 2012 King Features Synd., Inc.

# Even Exchange

by Donna Pettman

Each numbered row contains two clues and two 6-letter answers. The two answers differ from each other by only one letter, which has already been inserted. For example, if you exchange the A from MASTER for an I, you get MISTER. Do not change the order of the letters.

- |                      |           |                       |           |
|----------------------|-----------|-----------------------|-----------|
| 1. Honey farm        | — P — — — | Bird sanctuary        | — V — — — |
| 2. French capital    | — — — I — | Hair divisions        | — — — T — |
| 3. Part of a state   | C — — — — | Abundance             | B — — — — |
| 4. Thanksgiving corn | — — — Z — | One-syllable US state | — — — N — |
| 5. Talking bird      | P — — — — | Bugs Bunny's treat    | C — — — — |
| 6. Twisted ankle     | — P — — — | Run through a sieve   | — T — — — |
| 7. Titan             | — I — — — | Yankee general        | — R — — — |
| 8. Kitchen slats     | — — — — S | Computerized notepad  | — — — — T |
| 9. Southpaw          | — E — — — | Tall                  | — O — — — |
| 10. Forward-facing   | — — — N — | Iceiness              | — — — S — |

© 2019 King Features Synd., Inc.

# Salome's Stars

**ARIES** (March 21 to April 19) Your Aries leadership qualities can help bring order out of all that confusion, whether it's on the job or in the home. But be careful to guide, not goad, others into following you.

**TAURUS** (April 20 to May 20) Applying a more personal view to a job-linked issue could help provide better insight into those persistent problems. Use your keen Taurean logic to cut through the double-talk.

**GEMINI** (May 21 to June 20) Taking some time off could be the best way to get through that seemingly endless round of demands. You'll return refreshed and ready to tackle things from a new perspective.

**CANCER** (June 21 to July 22) Restoring a sagging professional relationship takes a lot of effort. By all means, state your position. But also make sure you pay close attention to the other person's point of view.

**LEO** (July 23 to August 22) A hot prospect intrigues the Big Cat, who is always on the prowl for a promising investment. But be careful that this "promise" has a chance of being kept. Check it out more carefully.

**VIRGO** (August 23 to September 22) A friend could use some of your compassion and concern. If he or she doesn't ask for help, be sure you step up and make the first move. Also, check out a new career possibility.

**LIBRA** (September 23 to October 22) You might have difficulty getting your opinions heard because of all the noise being made by the other side. But hang in there. Others should line up with you once they learn the facts.

**SCORPIO** (October 23 to November 21) Offering to help a colleague is commendable. But before you commit your time and effort, check to see if that person's situation is all that he or she has led you to believe it is.

**SAGITTARIUS** (November 22 to December 21) You soon should be seeing positive results from your recent efforts on behalf of a family member. On another matter, check that you have all the facts regarding a job assignment.

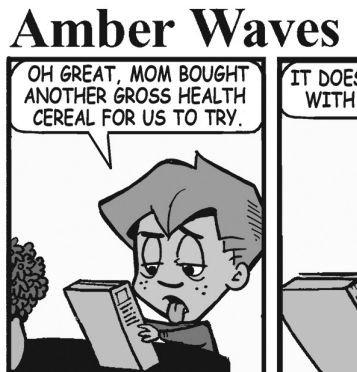
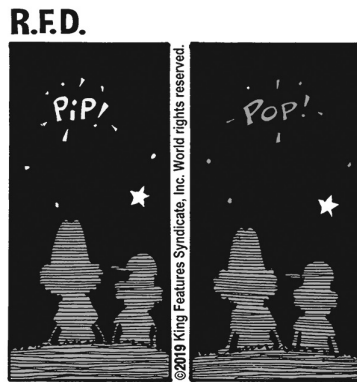
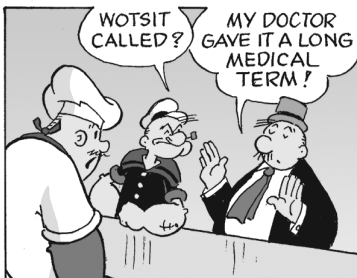
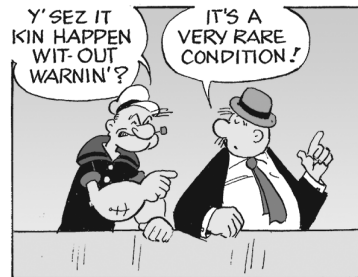
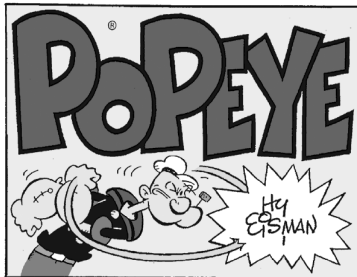
**CAPRICORN** (December 22 to January 19) Your aspects favor closer family relationships this week. Take time for visits, whether in person, by phone, by mail or in cyberspace. Let them know how important they are to you.

**AQUARIUS** (January 20 to February 18) A missed opportunity isn't always a negative. Maybe your instincts are telling you not to rush into something you "thought" was worthwhile. Make time for family this weekend.

**PISCES** (February 19 to March 20) Your sense of humor helps you get through a tricky situation. But some stick-in-the-muds might not be so willing to make the changes that you and others agree are necessary.

**BORN THIS WEEK:** You have a gift for making everyone you know — or even just met — feel important and welcome in your life.

(c) 2019 King Features Synd., Inc.



© 2019 King Features Synd., Inc.