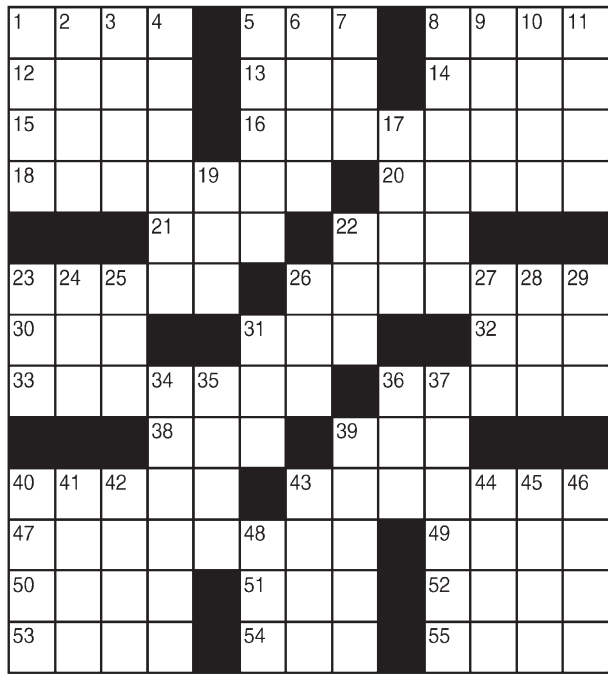


# King Crossword

**ACROSS**

- 1 Periodicals, for short
- 5 Cistern
- 8 Last writes
- 12 Guitarist Clapton
- 13 Brewery product
- 14 Infamous Roman
- 15 Genesis maker
- 16 Fan of classical music
- 18 Barbershop job
- 20 Stir up
- 21 Get on in years
- 22 Lubricate
- 23 Synagogue VIP
- 26 Hew
- 30 Swelled head
- 31 Write in the margins
- 32 Pod denizen
- 33 On the — (secretly)
- 36 Caulking material
- 38 A billion years
- 39 2,000 pounds
- 40 Angry dog's sound
- 43 Sleazy sort
- 47 Throughout your time
- 49 Rewrite, maybe
- 50 Satan's spe-



- 9 Suitor
- 10 Eye part
- 11 Ripped
- 17 Sandlike matter
- 19 Modern film
- 22 Chic no more
- 23 Scarlet
- 24 In earlier times
- 25 Violinist's need
- 26 Calf's mom
- 27 Choose, with "for"
- 28 Drenched
- 29 Aye opponent
- 31 "The Daily Show With — Stewart"
- 34 Staircase posts
- 35 Lounge around
- 36 "Bam!"
- 37 Except if
- 39 Forum garb
- 40 Singer
- 41 Split apart
- 42 "Think nothing —"
- 43 Takeoff's opposite (Abbr.)
- 44 Concept
- 45 Some ever-greens
- 46 Greek vowels
- 48 LummoX

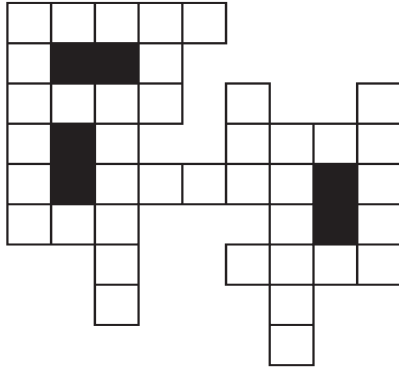
© 2019 King Features Synd., Inc.

# FEAR & KNOT

By: rj johnson

DOUBT? ... OR DARE!

- OEG
- ARL GEE
- TOUND
- ♥RANE
- RONDIO
- DUC
- NOUT
- ♥EDORC
- ♥UGN
- TICHEN
- ♥ARTEC
- ♥IGDR

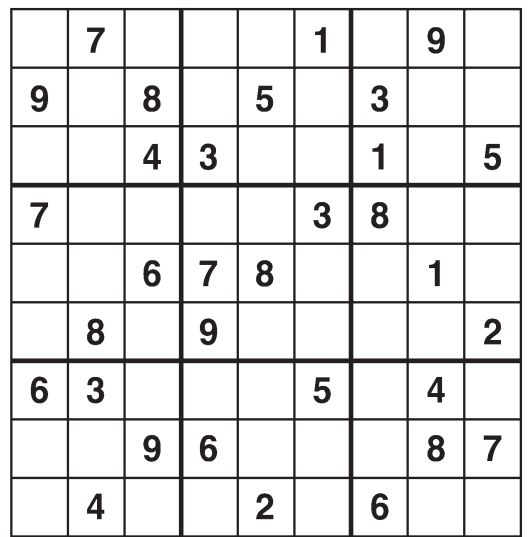


Unscramble these twelve letter strings to form each into an ordinary word (ex. HAGNEC becomes CHANGE). Prepare to use only ONE word from any marked (♥) letter string as each unscrambles into more than one word (ex. ♥RATHE becomes HATER or EARTH or HEART). Fit each string's word either across or down to knot all twelve strings together.

©2019 King Features Syndicate. All rights reserved.

# Weekly SUDOKU

by Linda Thistle



Place a number in the empty boxes in such a way that each row across, each column down and each small 9-box square contains all of the numbers from one to nine.

**DIFFICULTY THIS WEEK:** ♦♦

- ♦ Moderate
- ♦♦ Challenging
- ♦♦♦ HOO BOY!

© 2019 King Features Synd., Inc.

# Puzzles4Kids

by Helene Hovanec

## CODED RIDDLE

Change each letter to the one that comes immediately BEFORE it in the alphabet to find a riddle and its answer.

Here's a copy of the alphabet to guide you:

A B C D E F G H I J K L M N O P Q R S T U V W X Y Z

X I B U E P T I F F Q E P

P O T V O O Z E B Z T ?

I B W F B C B B - C B B - D V F .

©2019 King Features Synd., Inc. World rights reserved.

# Just Like Cats & Dogs

by Dave T. Phipps



# MAGIC MAZE ● BOOKENDS



Find the listed words in the diagram. They run in all directions forward, backward, up, down and diagonally

- Blue book
- Booked
- Booker
- Bookie
- Bookish
- Booklet
- Bookman
- Bookplate
- Bookstore
- Casebook
- Cookbook
- Cookbook
- Copybook
- Daybook
- E-book
- Handbook

©2019 King Features Syndicate, Inc. All rights reserved.

# Letter Box

by Linda Thistle

Place a letter in the empty boxes in such a way that each row across, each column down and each small 9-box square contains all of the letters listed above the diagram. When completed, the row indicated will spell out a word or words.



© 2012 King Features Synd., Inc.

# Even Exchange

by Donna Pettman

Each numbered row contains two clues and two 6-letter answers. The two answers differ from each other by only one letter, which has already been inserted. For example, if you exchange the A from MASTER for an I, you get MISTER. Do not change the order of the letters.

- |                        |               |                      |               |
|------------------------|---------------|----------------------|---------------|
| 1. Small stream        | — — — — K     | Janitor's tool       | — — — — M     |
| 2. Young hound         | — U — — —     | Red flower           | — O — — —     |
| 3. Tutorial            | — — — — O — — | Decrease             | — — — — E — — |
| 4. Team member         | — L — — — —   | Grace, e.g.          | — R — — —     |
| 5. Spicy powder        | — U — — — —   | Tote                 | — A — — —     |
| 6. Scant               | — — — — G — — | More malicious       | — — — — N — — |
| 7. Yuletide visitor    | — — — — A — — | — Fe                 | — — — — E — — |
| 8. Quantity of cookies | — A — — — —   | Bungle a task        | — O — — —     |
| 9. Sweepstakes         | R — — — —     | Pancake with pockets | W — — — —     |
| 10. Delivery bird      | — — — — K     | Stockpile            | — — — — E — — |

© 2019 King Features Synd., Inc.

# Salome's Stars

**ARIES** (March 21 to April 19) Your honesty is, as always, admirable. But you might want to be more tactful in discussing a sensitive issue with a family member. Remember: You can give advice without giving offense.

**TAURUS** (April 20 to May 20) An unexpected workplace snag should be handled quickly and efficiently so that it leaves you time for family get-togethers. Also, you might soon get that long-sought apology.

**GEMINI** (May 21 to June 20) Aspects favor family matters, especially where children might be involved. Spending time with loved ones helps restore some much-needed balance to your typically busy schedule.

**CANCER** (June 21 to July 22) That seemingly clear-cut agreement might not be quite so straightforward after all. Recheck for language that could make you liable for hidden costs and other unpleasant surprises.

**LEO** (July 23 to August 22) Careful, Kitty. Better to deal with someone with proven reliability than with a big talker who promises much but can't confirm that he or she will deliver. Your social life really zings this weekend.

**VIRGO** (August 23 to September 22) Your matchmaking skills are at peak performance levels both in helping to staff workplace teams for upcoming projects and for bringing people together on a more personal basis.

**LIBRA** (September 23 to October 22) You're finally seeing some progress with your new venture. But be prepared for it to continue at a slower pace than you're used to. Meanwhile, a loved one could be preparing a surprise.

**SCORPIO** (October 23 to November 21) A family member's success pulls you into the spotlight as well. Enjoy it, but don't let it overshadow or otherwise obstruct what you're doing with your own creative projects.

**SAGITTARIUS** (November 22 to December 21) Using what you already know might not be quite enough to get a proposed project off the ground. Look for any new information that might help tilt the scales in your favor.

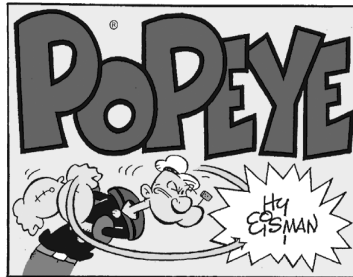
**CAPRICORN** (December 22 to January 19) Good news: While a changing workplace environment can be daunting for some, it could be the challenge you've been hoping for. If so, confront it with confidence and move on.

**AQUARIUS** (January 20 to February 18) It's a good time to recheck travel arrangements for any changes that could work to your advantage. Aspects also favor strengthening and restoring old, fraying relationships.

**PISCES** (February 19 to March 20) Using your intuitive reasoning helps you cut right through the double-talk and go straight to what's really going on around you. Stay the course until all your questions are answered.

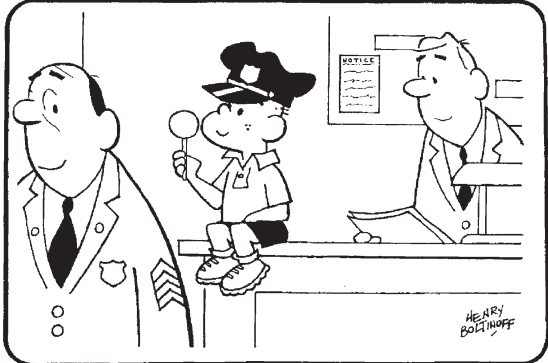
**BORN THIS WEEK:** You radiate light and warmth, and others love being close to you.

© 2019 King Features Synd., Inc.



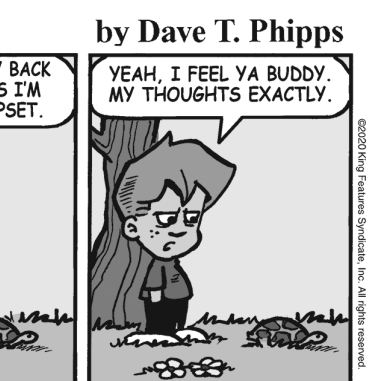
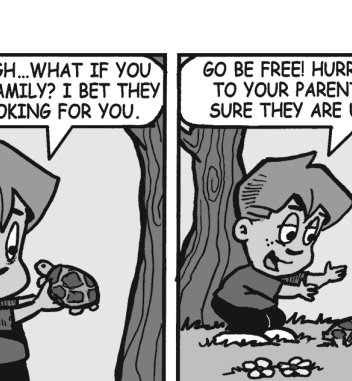
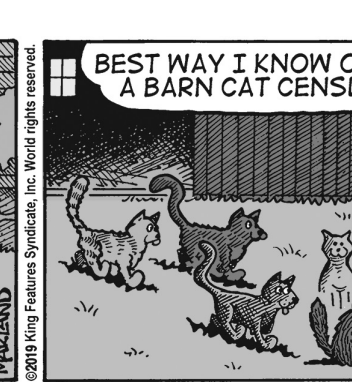
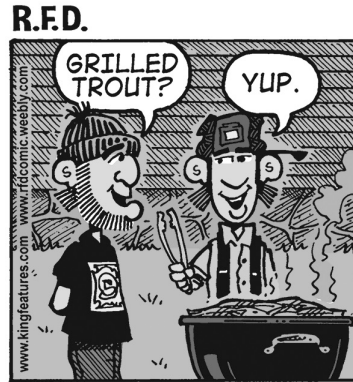
# HOCUS-FOCUS

BY HENRY BOLTHOFF



Find at least six differences in details between panels.

Differences: 1. Boy's hat is black. 2. Notice added to bulletin board. 3. Boy is holding a lollipop. 4. Officer has four stripes. 5. Officer has two buttons. 6. Desk sergeant's badge is missing.



© 2019 King Features Synd., Inc.