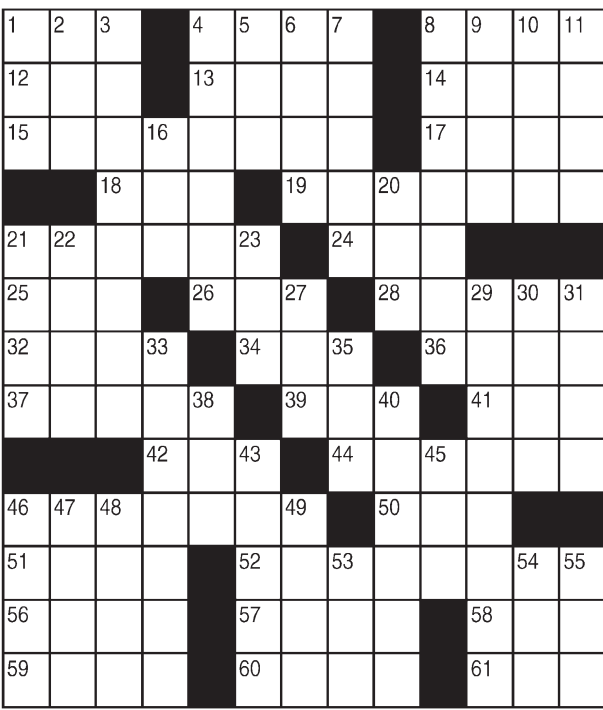


King Crossword

ACROSS

- 1 Old love boat
- 4 Cattle comments
- 8 Dispatch
- 12 Luau side dish
- 13 Reed instrument
- 14 Inlet
- 15 Small
- 17 Enthusiastic
- 18 Eviscerate
- 19 Soon
- 21 Rook
- 24 Potential syrup
- 25 Roman 52
- 26 Thanksgiving veggie
- 28 Pass along
- 32 Ricelike pasta
- 34 — Mahal
- 36 Cannonball, maybe
- 37 Color workers
- 39 High-pitched bark
- 41 A mere hand-ful
- 42 Mimic
- 44 Bets
- 46 Poetic feet
- 50 Existed
- 51 Tangelo trademark
- 52 Do some fir-ing
- 56 Sandwich cookie



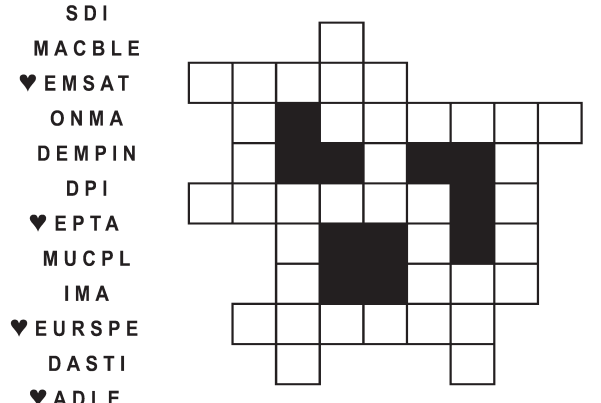
- 57 Great Lake
- 58 Londoner's letter
- 59 Cut, as logs
- 60 Tear to bits
- 61 Type mea-sures
- 7 Prophets
- 8 Resold for big profits
- 9 Corporate symbol
- 10 Shakespeare's river
- 11 Safecracker
- 16 Historic boy king
- 20 Listener
- 21 LummoX
- 22 Ethereal
- 23 Dine on
- 27 Has permis-sion
- 29 Of natural dimensions
- 30 State with certainty
- 31 Some ever-greens
- 33 Speech
- 35 Mandible
- 38 Agent
- 40 Hocked
- 43 Church leader
- 45 Petrol
- 46 Twosomes
- 47 City in India
- 48 Ball of yarn
- 49 Angry
- 53 Triumph
- 54 Buddhist sect
- 55 Wood and Wynn

© 2019 King Features Synd., Inc.

FEAR KNOT

By: rj johnson

DOUBT? ... OR DARE!



Unscramble these twelve letter strings to form each into an ordinary word (ex. HAGNEC becomes CHANGE). Prepare to use only ONE word from any marked (♥) letter string as each unscrambles into more than one word (ex. ♥RATHE becomes HATER or EARTH or HEART). Fit each string's word either across or down to knot all twelve strings together.

Puzzles4Kids

by Helene Hovanec

CODED RIDDLE

Change each letter to the one that comes immediately BEFORE it in the alphabet to find a riddle and its answer.

Here's a copy of the alphabet to guide you:

ABCDEFGHIJKLMNOPQRSTUVWXYZ

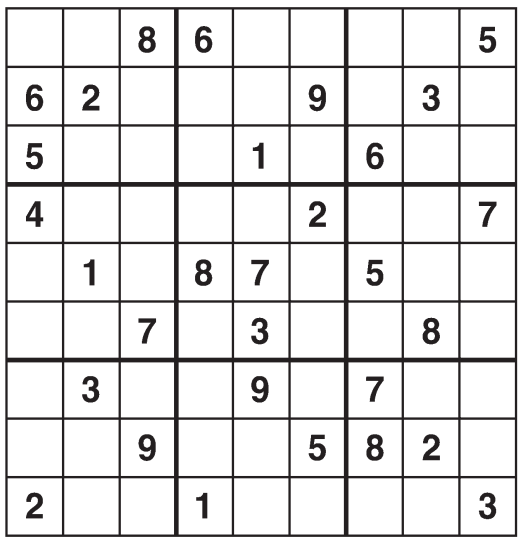
XIZ EJE UIF SPCPU HP PO B

TVNNFS WBDJPO? JU OFFEFE

UP SFDIBSHF JUT CBUUFSJFT.

Weekly SUDOKU

by Linda Thistle



Place a number in the empty boxes in such a way that each row across, each column down and each small 9-box square contains all of the numbers from one to nine.

DIFFICULTY THIS WEEK: ♦♦♦

- ♦ Moderate
- ♦♦ Challenging
- ♦♦♦ HOO BOY!

© 2019 King Features Synd., Inc.

Just Like Cats & Dogs

by Dave T. Phipps



MAGIC MAZE • GOT WORDS?

Z C G C Y V R O L H E B X U R

O L I R I M E B Y V S Q N K A

H E B H U Y A W T R O L J G H

E S B Y T B I H W U R P N A C

K I P G M O N D T B Z X V T T

S Q T I A O G E M O K I G O O

E C A O G Y O R H W G U G G G

S Q N E G O T I A T E R P O R

N L J H O R T F E C O C U B A

A Y X V T U E S Q F S G P T M

N M K J H F N E T O G E B C B

Find the listed words in the diagram. They run in all directions forward, backward, up, down and diagonally

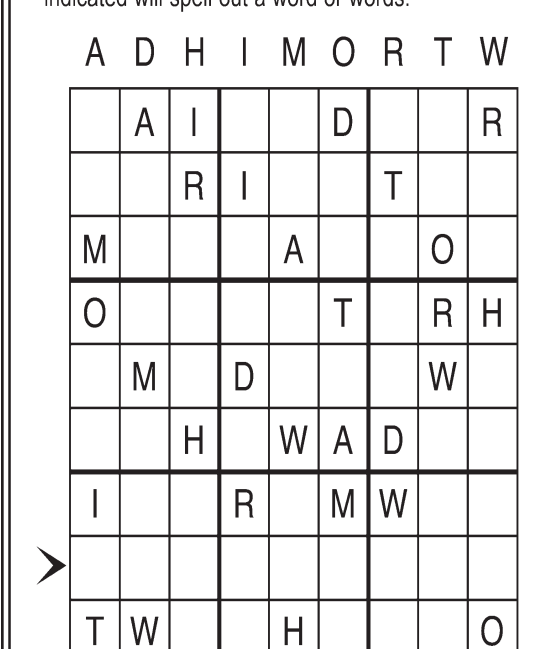
Begot	Gotcha	Gotten	Negotiate
Ergot	Gotham	Ingot	Spigot
Escargot	Gothenburg	Maggot	Turgot
Forgot	Gothic	Margot	

© 2019 King Features Syndicate, Inc. All rights reserved.

Letter Box

by Linda Thistle

Place a letter in the empty boxes in such a way that each row across, each column down and each small 9-box square contains all of the letters listed above the diagram. When completed, the row indicated will spell out a word or words.



© 2012 King Features Synd., Inc.

Even Exchange

by Donna Pettman

Each numbered row contains two clues and two 6-letter answers. The two answers differ from each other by only one letter, which has already been inserted. For example, if you exchange the A from MASTER for an I, you get MISTER. Do not change the order of the letters.

- | | | | |
|-----------------------|---------------|-------------------|---------------|
| 1. He loves me flower | _____ S _____ | Every 24 hours | _____ L _____ |
| 2. "Beat it!" | _____ M _____ | Fragment of paper | _____ P _____ |
| 3. Accountant's book | _____ E _____ | Hotel guest | _____ O _____ |
| 4. Ginger or pepper | _____ C _____ | Tower | _____ R _____ |
| 5. Herd of sheep | _____ L _____ | Dress | _____ R _____ |
| 6. Texas capital | _____ I _____ | Novelist Jane | _____ E _____ |
| 7. Might | P _____ | Lawn cutter | M _____ |
| 8. Journalist Gerald | _____ A _____ | Tiber and Danube | _____ S _____ |
| 9. Splotch | _____ M _____ | Cuss | _____ W _____ |
| 10. Cigar shaped | _____ B _____ | Dark tea | _____ O _____ |

© 2019 King Features Synd., Inc.

Salome's Stars

ARIES (March 21 to April 19) An offer to help with a stalled project should reassure you that you have a workable plan in spite of the problems in getting it up and running. The week's end brings more positive news.

TAURUS (April 20 to May 20) A past problem about a workplace situation re-emerges early in the week. Talking things out helps ease tensions by midweek, but some hurt feelings could linger a few more days.

GEMINI (May 21 to June 20) Optimistic aspects dominate your efforts. However, expect to confront some criticism, some of which might be valid, so keep an open mind. But overall, it's your views that will count.

CANCER (June 21 to July 22) Social interaction with new people, especially on the job, could be a bit strained in the early part of the week. But the awkwardness passes as you get to know each other better.

LEO (July 23 to August 22) Expect news about a follow-up to a workplace change that could make a difference in your career path. Meanwhile, new friends widen the circle for all you Social Lions who love to party.

VIRGO (August 23 to September 22) Enjoy your well-earned plaudits for a job well done. But be aware that some people might not share your colleagues' admiration, and you might have to work harder to win them over.

LIBRA (September 23 to October 22) It's a good week to recheck your probably already overlong "to do" list and decide what to keep and what to discard. Lose the clutter and focus your energy on what's really important.

SCORPIO (October 23 to November 21) This is a good time to take a new perspective on what you've been offered. Expanding your view could help to uncover any plusses or minuses that weren't apparent at first.

SAGITTARIUS (November 22 to December 21) Applying the usual methods to this week's unique challenges might not work too well. Instead, use your creativity to find a way to resolve any impasse that develops.

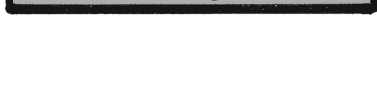
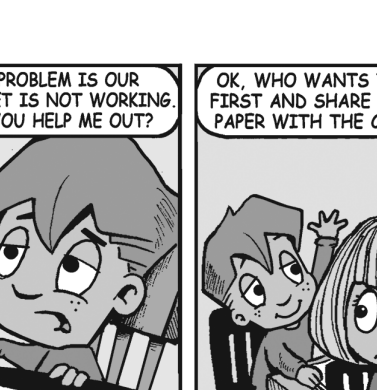
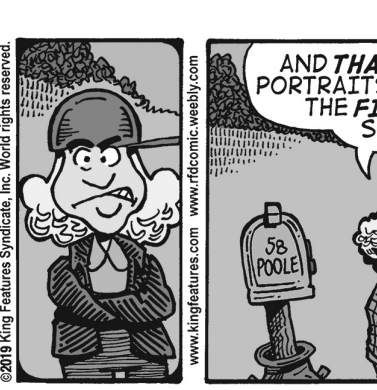
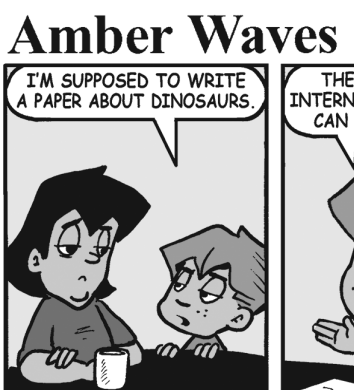
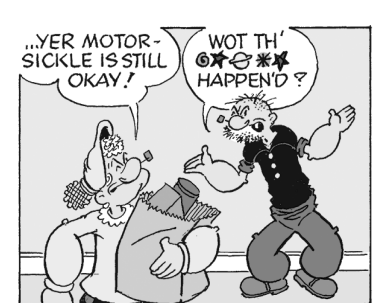
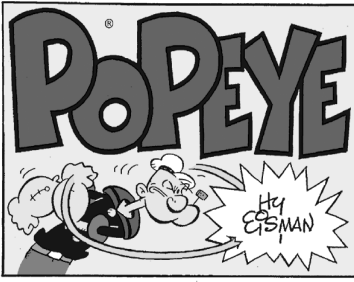
CAPRICORN (December 22 to January 19) So what if fate throws some obstacles in your path this week? Just keep in mind that the sure-footed and resolute Goat can get past any barrier by focusing on the goals up ahead.

AQUARIUS (January 20 to February 18) This week calls for better communication with people in both your private life and the workplace. Start by asking questions, and then pay close attention to the answers.

PISCES (February 19 to March 20) Potentially beneficial workplace changes could be closer than you realize. Make sure you know what's going on so that you're not left high and dry when the good things happen.

BORN THIS WEEK: You're not timid about pushing to have your aims realized once you've set your mind to accomplishing your goals.

© 2019 King Features Synd., Inc.



© 2019 King Features Synd., Inc.